



SUMMER 2021 SAFETY & OPERATIONS GUIDE

UPDATED JUNE 11, 2021

Our Summer 2021 Safety & Operations Guide outlines our plan to carefully and responsibly operate camp this summer. This guide has been updated to include the current provincial public health COVID-19 Safety Guidelines for Day Camps, and will continue to be updated as new information become available.



Attention Registered Families: Please complete the following forms to ensure that camp has the most upto date swim, transportation and health information for your camper(s) this summer. Please click the links below to access the forms.

[Swim Form](#)

[Transportation Form](#)

[Health Form](#)

TABLE OF CONTENTS



PAGE 3
CAMP ROBIN HOOD IS ON TARGET

PAGE 4
GROUP SIZE & PHYSICAL DISTANCING
Cabins as 'Cohorts'
Cabin Ratios and Staffing
Masks
Leadership Training (LIT/CIT) Program

PAGE 8
CABIN PROGRAMS & ACTIVITIES
Activities
Robin Hood Sports Academy (RHSA)
Rainy Days

PAGE 11
SWIM

PAGE 12
FOOD AT CAMP

PAGE 14
TRANSPORTATION
Bus Transportation
Parent Transportation
AM/PM Drop-Off and Pick-Up Procedures
Mid-Day Drop-Off & Early Pick-Up Procedures

PAGE 18
CLEANING & SANITIZATION PROTOCOLS

PAGE 20
HEALTH POLICIES & ROBIN AID
Health Care from the Robin Aid Team
COVID-19 Symptom Management

PAGE 25
WE'RE IN THIS TOGETHER

PAGE 26
HEALTH & WELLNESS SIGNAGE



ROBIN HOOD IS ON TARGET

THE SAFETY OF CAMPERS, STAFF AND
FAMILIES IS ALWAYS OUR HIGHEST PRIORITY

Camp Robin Hood is committed to implementing increased safety procedures and policies to minimize health risks and to provide your child with an amazing summer camp experience. Camp has 50 acres of space for open-air and outdoor activities. We are committed to doing all that we can to put careful and responsible plans in place to make Camp Robin Hood as safe as possible this summer.

T RANSPARENCY

As we have done from the beginning of the pandemic, we will strive to communicate openly and honestly with our families and staff. Our goal is to communicate what we know, when we know it. If you see an email from Robin Hood, please read it! We encourage two-way communication so please reach out. We're here for you.

A DAPTATION

At Robin Hood, we are focused on creating a fun experience that values community, growth and meaningful in-person interactions. Though some of our activities and traditions might be modified, our team has creative ways to safely achieve the outcomes that are so vital to a child's development. Procedures related to swim, lunch and transportation may also be adjusted to comply with public health regulations.

R ESPONSIBILITY

We will ask parents to take a few extra steps to keep everyone safe. There will be morning health screening for each child. We'll ask that you err on the side of caution and keep your children home when they don't feel well and abide by all public health regulations when not at camp. We'll be asking our staff to do the same.

G ROUPING

While cabin groups will have to keep distance from each other more than in previous summers, this will not feel like a drastic change. Camper to staff ratios will remain excellent with an even greater emphasis on the cabin group experience. Camp capacity may be lowered to abide by public health cohort regulations. In this event, priority will be given to campers that enroll earliest (in each age division).

E DUCATION

While camp is not school, we aim to teach our campers skills and behaviours that will carry them throughout their lives. We will also be dedicated to educating and reinforcing the importance of facial coverings and the need for physical distancing as outlined by public health. Our Health Centre and supervisory staff will ensure that proper measures are in place to maintain a safe environment on the bus and at camp.

T EAM EFFORT

We take great pride in keeping camp clean. We will hire more facility staff who will ensure washrooms, surfaces and equipment are cleaned and disinfected more frequently. Campers and staff will follow public health guidelines by washing and/or sanitizing hands regularly and using dedicated supplies and equipment for their own group. We are all in this together!

GROUP SIZE & PHYSICAL DISTANCING



SMALL STATIC CABIN GROUPS OF CAMPERS ('COHORTS')

- The number of campers placed in a cabin group will be limited by the requirements of local public health.
- We will make every effort to honour at least one friend request per camper.



NO CONTACT BETWEEN CABIN GROUPS (1 PER ACTIVITY)

- Cabins will maintain recommended distance from other cabins.
- Campers will remain in their assigned cabin groups for daily swim.
- Experiences that formerly brought campers from different cabin groups together (i.e. Options, Senior Play, Hobby Hubs and Extended Days) will not be offered this summer.



NO CAMP WIDE GATHERINGS

- Camp-wide special events (Colour Wars, Quest etc.) will be re-structured to accommodate for physical distancing.
- Camp-wide and section (age division) flagpole programs will only be offered if physical distancing requirements can be met.



SAFE INTERACTION WITH STAFF

- All staff will adhere to Personal Protective Equipment (PPE) requirements, as directed by public health.
- Cabin counsellors of our youngest campers will be especially trained to assist campers with aspects of our daily routine, such as sunscreen application, packing backpacks and opening lunch containers.

GROUP SIZE & PHYSICAL DISTANCING

Cabins as ‘Cohorts’

Campers will be organized into self-contained groups (otherwise known as ‘cabins’ or ‘cohorts’) with dedicated staff that stay together all day, every day. Groups will physically distance by not mixing or interacting with any other group during the camp day. Think of it as each cabin, travelling and experiencing camp together like a “family”.

Change times for swim will be extended as we will be limiting the number of campers changing indoors at any one time. Systems will be implemented to allow for proper indoor spacing when needed.

In order to maintain the safety of the group, our ability for individual camper re-assignment once a session has started will not be available. Camp Robin Hood’s capacity will be limited by our responsible decision to reduce the overall number of cabins (‘cohorts’) in camp to provide a safe, fun and rewarding experience.



GROUP SIZE & PHYSICAL DISTANCING

Cabin Ratios and Staffing

The limited number of campers in each cabin ('cohort') has been set out by public health. The cabin group will be together "all day, every day" and supervised by up to 3 staff depending on the age of the camper group. See the chart below.

CAMPER AGE GROUP	CAMPERS PER CABIN	AMOUNT OF STAFF
Pre-JK to Grade 1	10-15 campers	3 counsellors
Grade 2 to Grade 9	12-18 campers	2 counsellors

Cabin counsellors are responsible for the daily supervision and care of campers. All cabin counsellors are trained and supervised by Section Heads who are responsible for a number of cabins in an age group (i.e. Inter Girls is the age group for female campers completed grades 2 & 3). The majority of our Section Heads are certified Ontario teachers or in their final years of formal educator training. Staff hiring is well underway, with the goal to maintain staff ratios throughout the summer, even in the event of staff absences.

The Ontario Ministry of Health guidelines require that staff and camper groupings are as static as possible by having the same group of campers remain with the same staff, whenever possible. Each group is created with care, and space permitting, we will make every effort to honour at least one friend request. Cabin groups from SK to Grade 3 will be single gender. We will make every attempt to place campers who have completed grades 4-7 in gender-specific groups. There may be a need with our oldest campers and those in our LIT/CIT program to be in co-ed cabins as a result of registration numbers. Rest assured that issues related to privacy and social interactions will receive the utmost attention and supervision.

GROUP SIZE & PHYSICAL DISTANCING

Masks

As the safety of our campers and staff is our highest priority, Camp Robin Hood will responsibly adhere to public health guidelines regarding mask wearing. Our 2021 daily camp program is designed to maximize outdoor activities, and will require campers and staff to wear masks when two metres of distance cannot be maintained.

Our staff will be trained to ensure that campers will have plenty of opportunities for ‘mask breaks’ throughout the day (i.e. during activities that ensure two metres distance between campers). In addition, staff will continually assess the impact daily weather conditions have on campers, and implement appropriate ‘mask breaks’ when needed.

As per the public health guidelines, campers are required to wear well-fitted masks (e.g. non-medical). Families are responsible for providing masks for their campers on a daily basis. We recommend sending your child to camp with additional masks, to facilitate changing as needed (i.e. when soiled, damp or damaged). The front pocket of the Camp Robin Hood backpack is a perfect spot to house extra masks! We also recommend providing your child with a labelled (first & last name) fanny pack so they can store their masks when they take them off.

Our staff will be supplied with required surgical procedure masks as well as eye protection (i.e. goggles). Staff will be properly trained in the requirements of mask-wearing and use of eye protection in our setting.

Hand hygiene will be at the forefront of our daily camp routines. As a result, every time your camper takes off and puts back on their mask, our staff will ensure that proper hand washing and sanitizing procedures are in place.

While we are so encouraged that COVID-19 case counts continue to improve and vaccination rates increase, we are hopeful that over the course of the summer, mask wearing requirements as mandated by Public Health will adjust accordingly. However, the current reality of COVID-19 variants and their potential to impact our community are reflective in the protocols we must follow. Camp Robin Hood is committed to the daily health and safety of your child and we are going to have a ton of fun at the same time.

CABIN PROGRAMS & ACTIVITIES

Camp Robin Hood is known for our wide variety of amazing activities, led by a talented group of specialists and activity leaders. This is where much of the fun, engagement, friendships, and learning takes place. Our team has been working hard to re-imagine the process and make the experience better than ever. After months on screens, we know that campers are ready to enjoy the outdoors, connect with friends and have some REAL fun!



OUTDOOR AND OPEN AIR ACTIVITIES

- 50 acres of outdoor space is available.
- Traditional indoor activities will be moved to an open-air environment, or areas that are sheltered and well-ventilated.



QUALITY SMALL GROUP INSTRUCTION

- One cabin group will be scheduled at a time at each activity.
- Activity specialists will wear appropriate PPE.



ENHANCED CLEANING AND DISINFECTING PROCEDURES

- Campers and staff must wash/sanitize their hands before & after each activity.
- All used equipment, supplies, and all commonly touched surfaces will be cleaned and disinfected after each activity.



ADDITIONAL EQUIPMENT AND SUPPLIES TO PREVENT SHARING

- Dedicated supplies will be provided to each cabin group (e.g. common arts & crafts supplies).
- Additional equipment has been purchased to allow for disinfecting between use by cabin groups.

CABIN PROGRAMS & ACTIVITIES

Activities

Activity periods are 35 minutes in length, providing campers with sufficient time to wash/sanitize their hands between activities. Detailed cleaning and sanitization protocols have been created for each program area and will be in place for the summer.

The biggest change will be our ability to welcome all of our typical outside activity providers (i.e. programs not provided by our Robin Hood staff). In particular, this will impact some of the choices available to our campers in grades 4 to 7 (e.g. Options, Senior Extravaganza, Senior Play). Nonetheless, our camp program will continue to provide campers with a full schedule of age and skill appropriate activities that make a summer at Robin Hood so much fun! Below are the activities and programs that will be offered at camp this summer:

- | | |
|---------------------|-------------------|
| 9-Square In the Air | Gaga |
| Air-O-Sport | Hiking |
| Archery | Jewellery |
| Arrowsoft | Low Ropes |
| Arts & Crafts | Magic Show |
| Backyard Games | Mini Golf |
| Ball Hockey* | Music |
| Baseball* | Nature |
| Basketball* | Playground |
| Beach Volleyball | Pearls of Wisdom |
| Court Sports | Soccer* |
| Campcraft | Sportball |
| Canoe | STEAM challenge |
| Cooperative Games | Swim |
| Dance | Tennis* |
| EverBlast | Theatre |
| Field Sports | Water Play |
| Free Play | Wilderness Skills |
| Fun & Fitness | Yoga |

*Skill development at Robin Hood Sports Academy

CABIN PROGRAMS & ACTIVITIES

Leadership Training (LIT/CIT) Program

Our Leadership Training program for campers completed Grades 8 & 9 will be modified in consideration of public health guidelines. Our traditional approach of weekly leadership development activities combined with age group/activity placements will be adjusted. For this summer, LIT/CIT campers will not be having their typical 3-day retreat to Claremont Conservation Centre. The overall goal will be to continue to provide a unique leadership program that will still incorporate safe interactions so that skill building and experience can be developed. A more detailed weekly schedule will be communicated closer to the summer for those campers involved in this program.

Robin Hood Sports Academy (RHSA)

Robin Hood Sports Academy will strive to deliver its typical experience of drills, skills and game play each day. Daily options and Game Days will be modified to limit cabin ('cohort') mixing, and lead instructors will be distanced and wearing appropriate PPE when teaching skills. All other approaches for compliance at RHSA will be consistent with overall Camp Robin Hood protocols.

Rainy Days

Camp Robin Hood will be open on rainy days. We have many covered areas and some indoor areas that provide safe distancing between cabins ('cohorts') should we encounter "liquid sunshine".



SWIM



1 DAILY SWIM FOR ALL CAMPERS



DESIGNATED SWIMMING AREAS FOR EACH CABIN (“COHORT”)



MIX OF AN INSTRUCTIONAL AND RECREATIONAL SWIM EXPERIENCE



CONSISTENT LIFEGUARD AND INSTRUCTOR ASSIGNED TO EACH CABIN (“COHORT”)

Swimming is a much-loved experience at Camp Robin Hood. It is an important part of each camp day and a necessary life skill. The Camp Robin Hood swim facility provides excellent flexibility to safely deliver a swim program in our 4 heated pools.

Swimming pools have been deemed safe for children and adults because the COVID-19 virus is not waterborne and pools are properly treated with chlorine. There is no current evidence that COVID-19 can be spread to people through the water in a pool. In an attempt to maintain the highest safety & sanitization standards, families are required to provide a towel from home. Towel service will not be available this summer.

Current public health guidance requires cabins (‘cohorts’) to stay together during swim and have a designated space in the pool to accommodate all swimmer levels. This has resulted in a necessary modification to our daily schedule, where campers will be in the water once a day for a longer period of time. Each swim period will be a combination of skills, drills & fun. While we do intend to monitor camper progression in their swim levels, it will be more difficult to deliver our traditional model of instructional swim. Prior to the summer, we will be asking you to provide details of your child’s last swim level achieved so that we can do our best to assess and help your child become more skilled and confident in the water. Our swim level details can be found [here](#).

FOOD AT CAMP



**HANDWASHING BEFORE
AND AFTER EATING**



**ASSIGNED OUTDOOR LUNCH
AND SNACK SEATING WITHIN
EACH CABIN (“COHORT”)**

Cookouts

Camp Robin Hood provides a BBQ cookout lunch each Friday. Food will be served according to public health guidelines and a vegetarian option is always available.

Kids Kitchen

For families that would prefer another option for their camper’s lunch, we will once again use Kids Kitchen as our service provider. Kids Kitchen provides a COVID-19 friendly delivery process to camp and our staff has a well established system to make sure campers receive their lunch. Kids Kitchen provides flexible ordering and a wide variety of menu items. More details will be provided in June.

Daily Snack

Each camper will receive a daily snack/treat that is individually packaged in single serve portions. We encourage families to send along additional snacks as our staff will allow for campers to have “snack breaks” throughout the day.

Lunch Procedure

Each cabin (‘cohort’) will be assigned an outdoor lunch area. Campers will be monitored by counsellors throughout the lunch period, and safe eating procedures will be enforced, including handwashing before and after eating.

FOOD AT CAMP

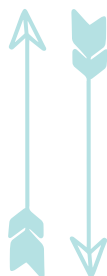
Water at Camp

Keeping our campers hydrated throughout the day is a priority. Public health guidelines recommend that each camper bring their own well-labeled water bottle from home for refilling throughout the day. There will be plenty of water stations around camp.

Food at Specialties

Based on public health guidelines, activities incorporating food at camp will be permitted. Camp Robin Hood will safely follow all regulations related to food distribution and serving (i.e. s'mores at the campfire).

Please note: Camp Robin Hood is a “nut-aware” setting and does not provide Kosher food. Please read product labels and do not send any food which may contain nuts.



TRANSPORTATION

Bus Transportation



BUSES WITH ASSIGNED SEATING

- Campers will be assigned the same seat on the bus each session.
- Only siblings or campers from the same cabin ('cohort') will be allowed to sit together in the same bench seat.



SAFE INTERACTION WITH STAFF, CAMPERS AND FAMILIES

- Campers and caregivers are required to wear a mask and be physically distanced at the bus stop.
- Staff and campers will wear masks on the bus.
- Campers and staff will be required to sanitize their hands prior to boarding or disembarking from the bus.



MORNING HEALTH SCREENING

- Prior to boarding the bus, both staff and campers will be required to complete and submit a daily health screening using the [OPN Screening App](#).
- Campers and staff that do not meet the required health screening qualifications may not attend camp that day.



ENHANCED CLEANING AND DISINFECTING OF BUSES

- Each bus will be cleaned and disinfected daily.
- Hand sanitizer will be provided for each bus.

The long-standing relationship with our bus provider Landmark, has us confident that we can provide a safe experience for our campers and staff. Landmark's commitment to driver training, disinfection and experience working with several school boards throughout this past year makes them the perfect partner. To learn more about our commitment to safe, efficient and fun bus rides, check out our [bus video](#).

TRANSPORTATION

Bus counsellors and drivers are especially trained for their daily responsibilities including daily opening of windows and roof hatches to ensure proper ventilation during each bus ride. Daily arrival and departure protocols at camp will be in place to ensure safe travel between the bus area and cabin. Our commitment to “the camp day starts on the bus” will continue, however necessary changes will be made to ensure that fun on the bus can be done safely. Despite not being able to cheer or sing on the bus, our team is putting together a COVID-friendly program so we can have a Bus Challenge Cup champion each session.

For each session, families will need to determine the single address or neighbourhood location they want their child picked-up from and dropped-off at. This policy is in place so that we may properly reduce virus transmission and have the ability to contact trace effectively.



TRANSPORTATION

Parent Transportation



CONTACTLESS PICK-UP AND DROP-OFF PROCEDURE

- Families will be assigned a pick-up and drop-off time to minimize the traffic in and out of camp.
- For those campers who cannot independently remove a seatbelt or car seat buckle, caregivers will be required to assist and wear a mask. Otherwise, caregivers are asked to stay in their vehicles.
- Camp Robin Hood staff in appropriate PPE will assist campers with exiting and entering the vehicles.



ON-SITE HEALTH SCREENING

- Prior to exiting the vehicle, campers will be required to submit a daily health screening using the [OPN Screening App](#).
- Campers and staff that do not meet the required health screening qualifications may not attend camp that day.



HAND SANITIZING STATIONS

- Hand sanitizing stations have been added to areas adjacent to the parking lots.
- Campers will be required to sanitize their hands prior to joining their cabins ('cohorts').

Morning (AM) Drop-Off and Afternoon (PM) Pick-Up:

In the morning...

- Plan to arrive at camp between 8:40am – 9:00am each morning.
- Enter at GATE B (by the beige house).
- Drive carefully to the porch. Stay in your car.
- Show our staff your completed camper COVID-19 daily health screening using the OPN App.
- Your camper(s) will be helped from the car by our staff.
- Cars will drive around the circular driveway and exit camp at GATE C.

TRANSPORTATION

In the afternoon...

- Plan to arrive at camp by 4:00pm, enter at GATE D and join the line of cars awaiting entry to our pick-up area.
- After our buses have left the site, our staff will direct you to drive slowly into the pick-up area. Stay in your car.
- Your camper(s) will be brought to and helped into your car.
- When your campers are safely in your car, exit camp through GATE B.
- Please remember to drive SLOWLY while on camp property.

In The Event of a Mid-Day Drop-Off and/or Early Pick-Up

Mid-Day Drop-Off:

- If your child will be arriving late to camp (i.e. a doctor's appointment), please let us know by email (robin@camprobinhood.ca) so that we can mark your camper(s) away and the bus can know not to expect your camper(s).
- On arrival at camp, pull into and park in GATE A. Stay in your car.
- Call the office at 416-736-4443 to let us know you are at camp.
- One of our staff will come out to get your camper(s) from your car. Show our staff your completed camper COVID-19 health screening using the OPN App. We will sign them in and call for their Section Head or Counsellor to come to get them from the office porch.

Early Camper Pick Up:

- Email robin@camprobinhood.ca your expected time of pick up by 1:00PM on the day of your pick up.
- On arrival at camp, pull into and park in GATE A. Stay in your car.
- Call the office at 416-736-4443 to let us know you are at camp.
- One of our staff will bring your camper(s) to your car and we will sign them out of camp.

CLEANING & SANITIZATION PROTOCOLS



ASSIGNED CLEANING TEAM

- Team of staff who have been thoroughly trained on cleaning protocols and strictly supervised to ensure adherence to cleaning protocols.



CLEANING TIMELINES AND SCHEDULES

- Cleaning schedules will be documented and maintained according to public health guidelines.
- Shared facilities and program areas will be cleaned and sanitized between use by different cabins ('cohorts').



MANDATORY HANDWASHING

- All staff and campers are required to wash and sanitize their hands between activities and before & after lunch.
- Handwashing and sanitization stations have been added throughout the camp.



APPROVED COMMERCIAL CLEANERS AND DISINFECTANTS

- Health Canada recommended soaps and sanitizers are readily available throughout camp.
- Health Canada approved, commercial-grade cleaners and disinfectants will be used on all commonly touched surfaces, bathrooms and program areas.

Cleaning removes debris and dirt from a surface. Disinfecting destroys or inactivates both the bacteria and viruses identified on the product's label (like COVID-19) on hard, nonporous surfaces. Disinfecting is one of the most reliable ways to help lower the risk of spreading germs from surfaces by touch. Camp Robin Hood utilizes disinfectants that are approved by Health Canada to kill viruses on hard surfaces.

CLEANING & SANITIZATION PROTOCOLS

Our maintenance team will disinfect all program areas, bathrooms and office areas throughout the day. Signage will be posted throughout camp as a reminder of the importance and our commitment to cleaning and sanitization.

What is the difference between disinfecting and sanitizing a surface?

The main difference is that Health Canada–approved sanitizers only have claims for bacteria, while disinfectants have claims against both bacteria and viruses. Camp Robin Hood is committed to both cleaning and disinfecting commonly touched surfaces, bathrooms and program areas.

Bathrooms

Camp bathrooms will be shared and frequently disinfected. Signage at all bathrooms will be in place to remind campers and staff of our enhanced protocols to limit the number of individuals using the bathroom at any given time.



HEALTH POLICIES & ROBIN AID

Our Health & Wellness Director Bev Unger, RN, has been providing leadership in our health centre for 20 years. As the co-chair of the Ontario Camps Association (OCA) COVID-19 Task Force in 2020, Bev brings a level of knowledge and experience that puts Camp Robin Hood in a great position to manage all issues related to COVID-19 this summer. Her understanding of public health guidance, her integral role in Camp Robin Hood's planning and the hiring of 2 experienced Registered Nurses provides us with the confidence that our camp families and staff are in good hands.



FULL TIME HEALTH AND WELLNESS DIRECTOR & MEDICAL TEAM

- Our health centre ('Robin Aid'), is staffed with 3 Registered Nurses and a nursing student.
- Robin Aid is supported by our camp doctor who is on-call should consultation be required.



DAILY HEALTH SCREENING

- Campers and staff will utilize the [OPN Screening App](#) daily.
- Camp staff will be trained to monitor and identify illness throughout the camp day, and if necessary, will seek support from Robin Aid.



OPEN COMMUNICATION WITH FAMILIES

- Families will be immediately notified of any positive cases or potential exposure to someone that tests positive for COVID-19.



THOROUGH SYMPTOM TRACKING AND CONTACT TRACING

- Our dedicated COVID-19 Coordinator will work closely with our Robin Aid team to effectively manage all aspects of contact tracing and symptom tracking.

HEALTH POLICIES & ROBIN AID

Health Care from the Robin Aid Team

To ensure the proper care of our campers and staff for both COVID-19 and other health related matters, we have given great consideration to the physical space that Robin Aid occupies. We are considering all aspects of traffic flow in and out of Robin Aid so that we can maintain the highest standards of care. Our Robin Aid team will do assessments (triage) outside in an appropriately sheltered venue. Anyone with signs or symptoms of COVID-19 will be isolated and assessed by a camp nurse.

COVID-19 Symptom Management

Some of the more commonly reported symptoms that may be of concern and result in campers and staff having to stay home include:

- Fever and/or chills
- Cough or barking cough (croup)
- Shortness of breath
- Decrease or loss of taste or smell
- Sore throat or difficulty swallowing
- Runny or stuffy/congested nose
- Headache
- Nausea, vomiting and/or diarrhea
- Extreme tiredness or muscle aches
- Pink eye (adults 18+ only)
- Frequent falls (for older adults)

Camp Robin Hood will be using [this resource](#) from York Region Public Health to guide symptom management information throughout the summer.



HEALTH POLICIES & ROBIN AID

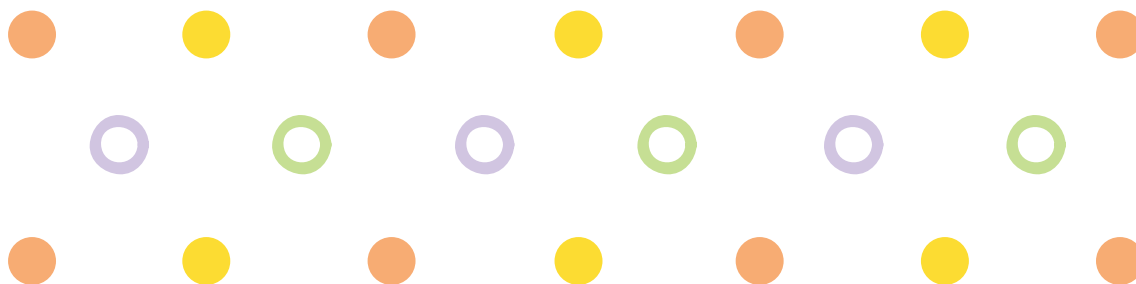
Please read below for the answers to frequently asked questions relating to how we will be managing COVID-19 symptoms at camp this summer:

What if a camper or staff does not pass the daily COVID-19 health screening?

Camp will be notified daily (via the OPN Screening App) whether a camper or staff have passed the health screening. If a camper or staff does not pass the health screening, they should not proceed to camp. They will be contacted by our office during that day and will be able to return to camp when cleared by our Health & Wellness Director, in accordance with public health.

What if a camper/staff has or develops COVID-19 symptoms during the camp day?

- Any camper or staff who develops COVID-19 symptoms during the day will be seen and assessed by one of our Robin Aid staff and sent home from camp.
- Within an hour of being notified, campers or staff being sent home will have to be picked up from camp, along with their siblings. Camp will provide specific instructions regarding our safe pick-up procedure. While awaiting pick-up, campers and staff (including their siblings) will be supervised by a member of our Robin Aid team in a designated isolation area.
- Once picked up from camp, the camper or staff member will then be required to get a COVID-19 PCR test and, as per public health guidance, all members of the household will be required to self-isolate until a negative test result is received.
 - If a COVID-19 symptomatic camper or staff chooses not to get the COVID-19 PCR test, then they, along with their household, will have to self-isolate for 10-14 days or as directed by local public health.



HEALTH POLICIES & ROBIN AID

What if a positive case is identified at camp?

- If a camper or staff member tests positive for COVID-19: Camp must be notified and the household must isolate. The camp will consult with York Region Public Health to determine who in our camp population should be notified and who needs to begin out-of-camp isolation. Public health will also determine the exact return to camp date for campers or staff. If the camper or staff lives within another public health unit they will also be required to obtain and follow direction from the local public health unit where they live.
- If a member of your household tests positive OR is identified as a close contact to someone who has tested positive for COVID-19: In this case, the camper or staff would be considered a close contact. The camper or staff will be required to isolate and obtain a COVID-19 PCR test. York Region Public Health or the public health unit where the positive case has been identified will intervene. While waiting for direction from public health you should monitor for symptoms of COVID-19. Each case is unique, our Robin Aid staff will work with you and public health to determine the next steps.

If you have had a COVID-19 PCR test, please visit this link from York Region Public Health that explains next steps: "[TESTED! NOW WHAT?](#)"

- If Camp Robin Hood is informed of a positive case of COVID-19 within our camp community: Camp is required to notify York Region Public Health. We will assist public health with contact tracing and follow their guidance. York Region Public Health will determine who in our camp population should be notified and who needs to begin out-of-camp isolation.

Rest assured, that in all matters related to COVID-19,
we are committed to maintaining confidentiality.

HEALTH POLICIES & ROBIN AID

When can a camper or staff safely return to camp after having a COVID-19 PCR test?

If a test is NEGATIVE:

The camper or staff and household may return to regular activities, including camp, unless you are a:

- Contact of a positive COVID-19 case
- Close contact of someone who is symptomatic but remains untested
- Returning traveller under mandatory quarantine

If any of the above apply, you must continue to isolate and your household members must stay home, except for essential reasons, for the full 14-day requirement. In addition to the above, a camper or staff can only return to camp if they are: fever-free for 24 hours (without the use of fever-reducing medications) and have improved symptoms, if they were symptomatic.

If a test is POSITIVE:

The camper or staff and their household must isolate and obtain direction from their local public health unit. Camp will follow direction from York Region Public Health, who will be assisting camp with contact tracing and return to camp dates.

Prior to returning to camp, a 'Camp Robin Hood Return To Camp Form' will be required to be completed by the family or staff and submitted by 7:30am on the day the camper (and their siblings) or staff are cleared to come back to camp.



HEALTH POLICIES & ROBIN AID

In-Summer Absence Policy

It has always been our goal to partner and work together with you to determine if our summer program is the most suitable for your child. When you choose to enroll your child at Camp Robin Hood, you are reserving space, time, supplies and staffing. In many ways, the commitments we make to site preparation, camp equipment, health and safety supplies, bussing, and personnel are in place by June 1st. So in many ways, camp really starts weeks before our first campers arrive.

Once camp begins, it is our policy that no refunds or credits will be given for any incidental absences or missed days. However, in the event that a camper is required to stay home from camp due to COVID-19 public health directives, the following policy will be in place:

Camp days missed due to COVID-19 public health directives	Camp Fee Credit or Refund*	Camp Transportation Refund
First 4 Days Absent	Non-Refundable	Non-Refundable
Additional Days Absent	Families may select from... A) Credit 100% of prorated daily fee or B) Refund 50% of prorated daily fee	Refund \$20/day (door-to-door) \$10/day (neighbourhood)

*All credits and refunds apply to full-day absences and will be calculated and issued in September based on your family's rate.



WE'RE IN THIS TOGETHER

Maintaining the health and safety of our community is a shared responsibility. This Safety and Operations Guide outlines the careful and responsible steps we will be taking to provide a safe experience for campers, staff and families. We humbly ask that Camp Robin Hood families do their part, by adhering to recommended public health measures outside of camp, to limit the transmission of COVID-19. We are asking the same of our staff

Thank you for taking the time to review our plans for the upcoming summer. We anticipate updating this guide as new information is provided by the Ontario Camps Association and York Region Public Health.

We continue to pour all of our energy into making this a safe and special experience for your family. It will take all of our efforts to stay on TARGET this summer.

Sincerely,

Sari & Howie Grossinger
Camp Owners/Directors



PROMOTING HEALTH & WELLNESS AT CAMP

Here are some of our fun and informative signs that will be posted around camp this summer to promote health and wellness! These serve as great reminders for our campers and staff to help them practice healthy habits all summer long!

CAMP ROBIN HOOD

6 STEPS TO AWESOME HANDWASHING!

- 1. Wet**
WET YOUR HANDS WITH CLEAN WATER
- 2. Lather**
LATHER YOUR HANDS BY RUBBING WITH SOAP
- 3. Scrub**
SCRUB YOUR HANDS, IN BETWEEN YOUR FINGERS, AND UNDER YOUR NAILS FOR AT LEAST 20 SECONDS
- 4. Rinse**
RINSE YOUR HANDS UNDER CLEAN RUNNING WATER
- 5. Dry**
DRY YOUR HANDS USING A CLEAN TOWEL
- 6. Finish**
USE PAPER TOWEL TO TURN OFF TAP AND DISCARD WASTE IN THE GARBAGE

PROMOTING HEALTH & WELLNESS AT CAMP



WEAR YOUR MASK



FOR YOUR SAFETY & THE SAFETY OF OTHERS

COVER YOUR COUGH | **KEEP YOUR DISTANCE** | **WASH YOUR HANDS**



Please maintain a safe physical distance of 6 feet



CAMP ROBIN HOOD

How to Safely Wear Your Mask

Source: York Region Public Health



Do's

- ✓ Wash your hands for at least 15 seconds or use alcohol-based hand sanitizer before and after touching your mask.
- ✓ Ensure the right side of the mask is facing outwards.
- ✓ Secure the elastic loops of the mask around your ears.
- ✓ Cover your mouth and nose with the mask and ensure there are no gaps between your face and the mask.
- ✓ Replace your mask once it becomes damp or soiled, and make sure cloth masks are washed at home every night.